

# GRAFIX

**creative** studio

---

✉ [rahat.grafix@gmail.com](mailto:rahat.grafix@gmail.com)

☎ +61 451 833 914

185 Kings Georges Road, Roselands,  
NSW 2196, Sydney, Australia

# DIGITAL SIGNAGE SOLUTIONS



## STANDALONE VERSION

Plug & Play  
Timer On & Off  
Timing Play



## ANDROID VERSION

Android System  
WiFi/LAN Connect  
Multimedia System



## WINDOWS VERSION

Windows System  
WiFi/LAN Connect  
Multimedia System



## MONITOR VERSION

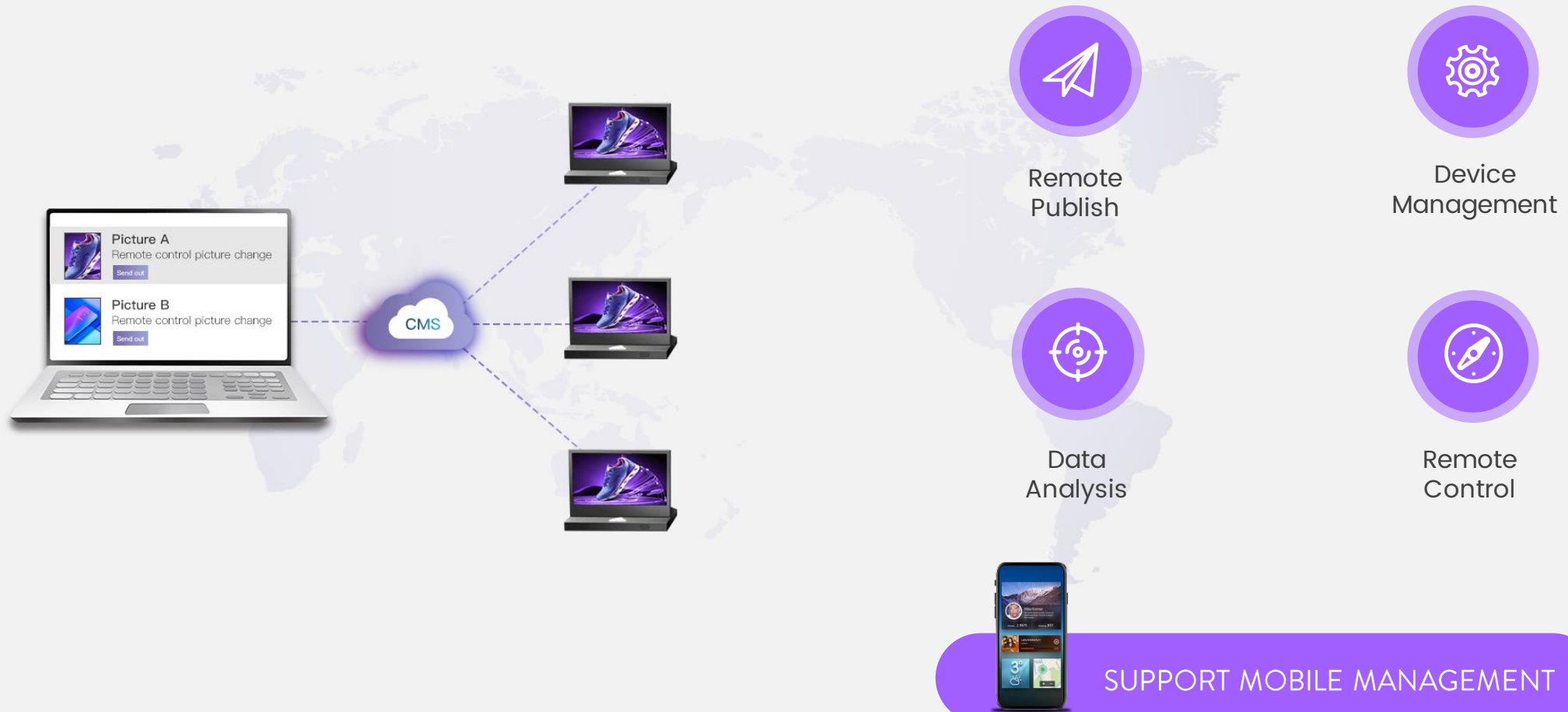
Monitor function  
HDMI, VGA, DVI Port  
HDMI-IN Solution



## CUSTOMIZATION

Support Full Customization Solution

# CONTENT MANAGEMENT CMS



# PRODUCTS



- **STRETCHED BAR LCD DISPLAY**

- Shelf Display
- Ultra Wide LCD



- **DIGITAL POSTER**

- Digital A Board
- Battery-Powered Digital Poster
- Digital Poster Series



- **INDOOR SIGNAGE**

- Floor Standing Totem
- Wall Mounting LCD Display
- Commercial Tablet
- Square Screen
- High Brightness LCD
- Industrial Control Panel
- Meeting Room Tablet
- Open Frame LCD Display
- Double-Sided Window Display
- LCD Video Wall/Splicing Screen



- **OUTDOOR SIGNAGE**

- Waterproof Floor Standing LCD Display
- Wall Mounting LCD Display
- Battery-Powered Waterproof LCD Display
- Ultra Slim Outdoor LCD Display



- **INTERACTIVE DISPLAY**

- Interactive Whiteboard
- Fitness Magic Mirror
- Touch Kiosk
- Touch Table
- Self-Order Kiosk
- AR Mirror

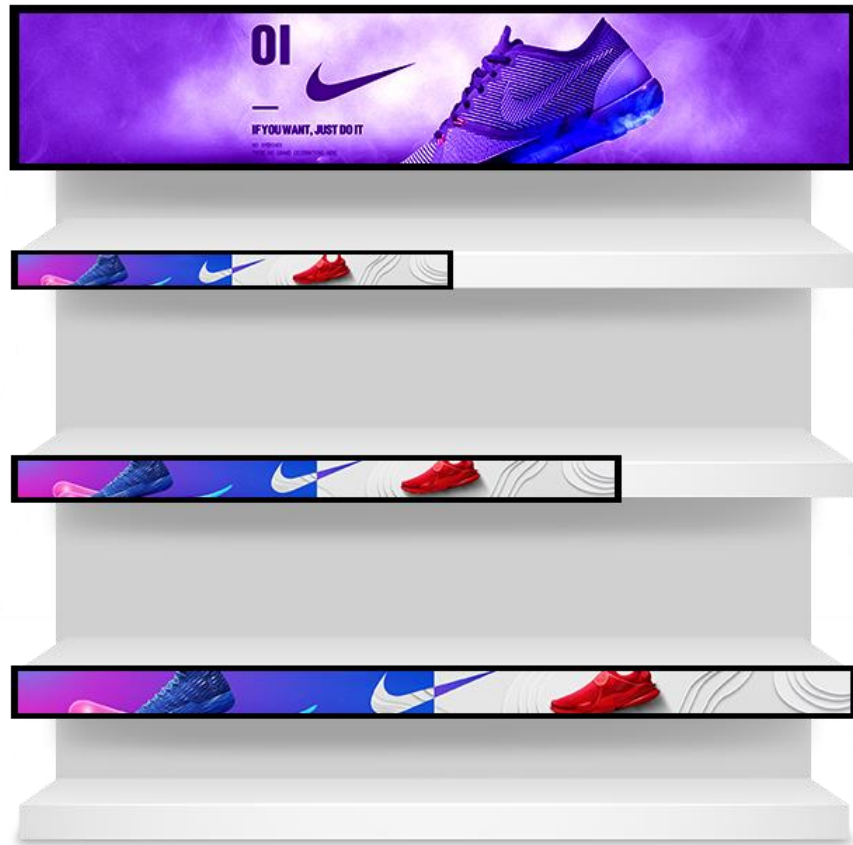


- **COVID-19 SOLUTION**

- LCD Hand Washing
- Facial Recognition Thermometer Display

# STRETCHED DISPLAYS

## DIGITAL SHELF



SMART RETAIL

- 19" 23" 24" 28" 29" 35" 36" 37" 43" 47" 48" 88"

- Shelf Display
- Sync Play
- Touch Optional
- Multiple Sizes
- Multiple Interfaces
- Easy Assembly

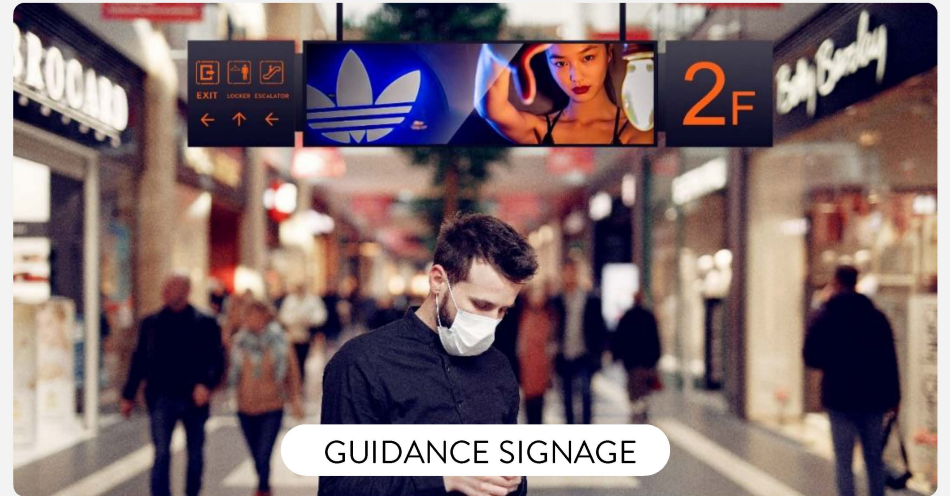


# STRETCHED DISPLAYS

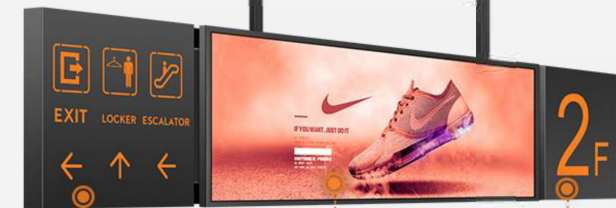
## ULTRA WIDE LCD



SMART RETAIL



GUIDANCE SIGNAGE



Guidance Signage  
( LED light inside )

Double-sided  
Stretched Bar  
LCD Display

Guidance Signage  
( LED light inside )

# STRETCHED DISPLAYS

## MULTI-SIZE

TO MEET THE NEEDS OF ALL OCCASIONS

### SHELF DISPLAY OPTIONS

Unit:mm

23" W597×H60

35" W892×H60

47" W1209×H63

19"

W495×H114

24"

W616×H138

28"

W735×H168

29"

W741×H240

36"

W896×H267

37"

W932×H286

43"

W1115×H231

48"

W1218×H248

88"

W2158×H611

# APPLICATIONS

## STRETCHED LCD DISPLAY



CASE

PARTNERS



STARBUCKS

swatch+

.....



# PORTABLE DISPLAY DIGITAL POSTER



32"

43"



• 4K Optional

• Movable with casters

• Touch Optional

• Foldable Design

• Black/White Optional

• Free-of-installation



# BATTERY-POWERED DIGITAL POSTER

## NO NEED WALL OUTLET



Built-in Replaceable  
Lithium Battery >

12 hours

BATTERY PLAYTIME



43"



- Foldable Design
- Full HD Screen
- CMS Cloud Control
- Battery Powered
- Android OS
- Free-of-installation



# PORTABLE DISPLAY DIGITAL POSTER SERIES



40"



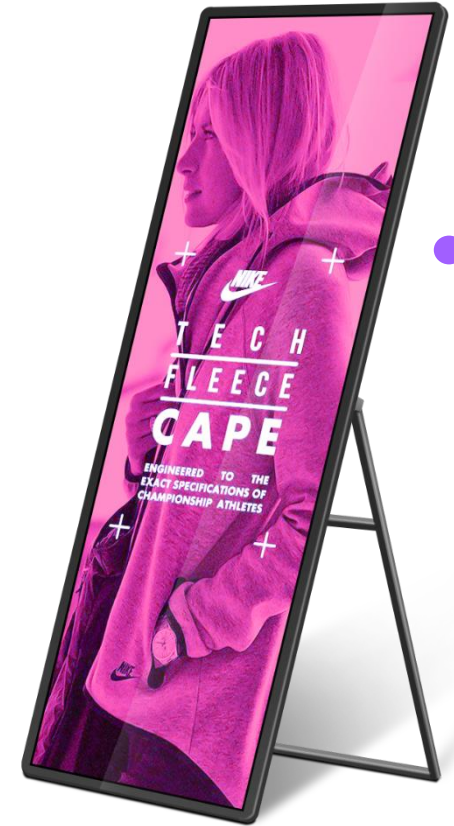
ATTRACTIVE  
LED LIGHT

40"



HIGH  
BRIGHTNESS

49"



4K  
RESOLUTION

68"

# APPLICATIONS

## DIGITAL POSTER



RESTAURANT



RESTAURANT



SHOP

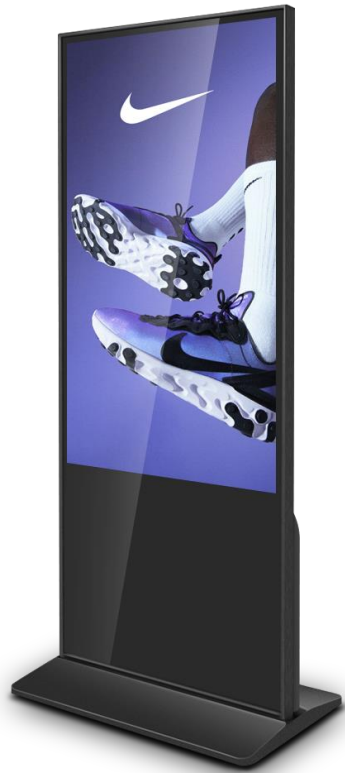


ADIDAS

15.6" BATTERY POWERED  
MOVABLE DISPLAY

# FLOORSTANDING DIGITAL SIGNAGE

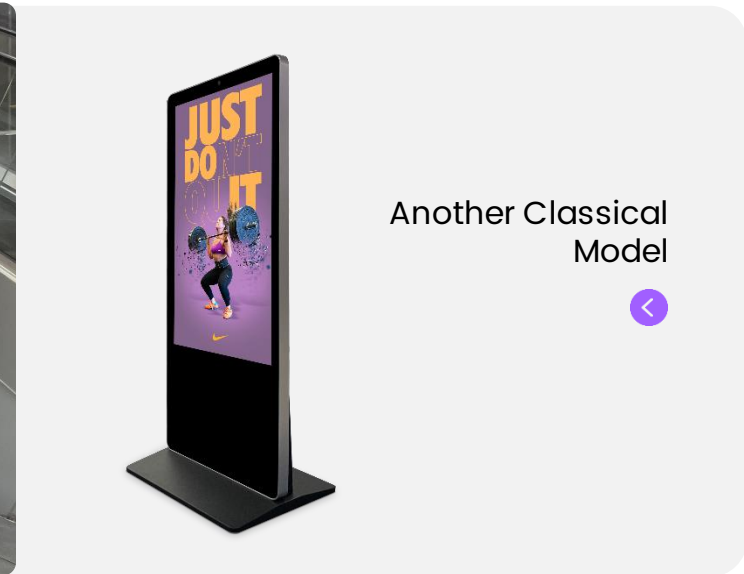
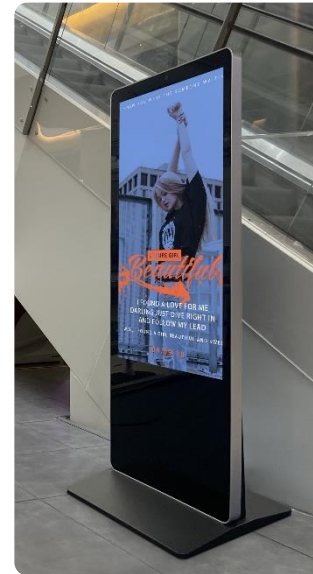
## DIGITAL SIGNAGE



● BLACK



○ WHITE



Another Classical Model



43"

49"

55"

65"

75"

86"



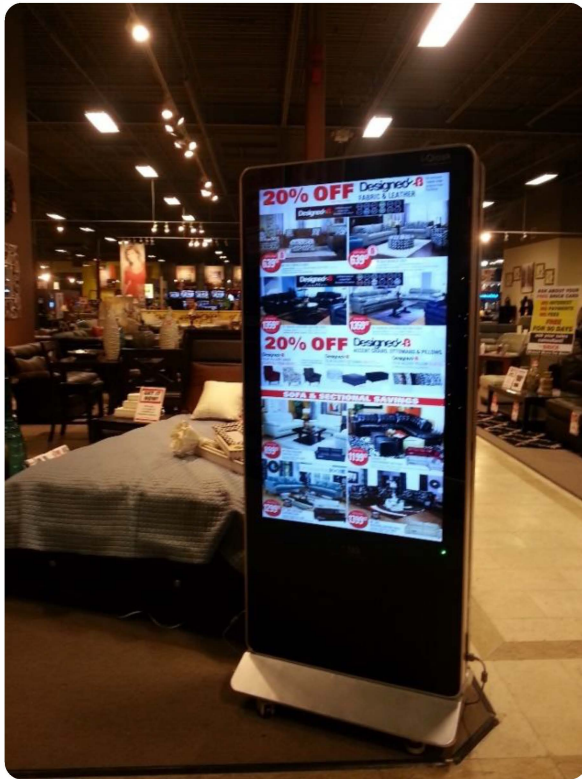
- 4K Optional
- Multiple Interfaces
- Touch Optional

- Full Tempered Glass
- Black/White Optional
- Camera Optional



# APPLICATIONS

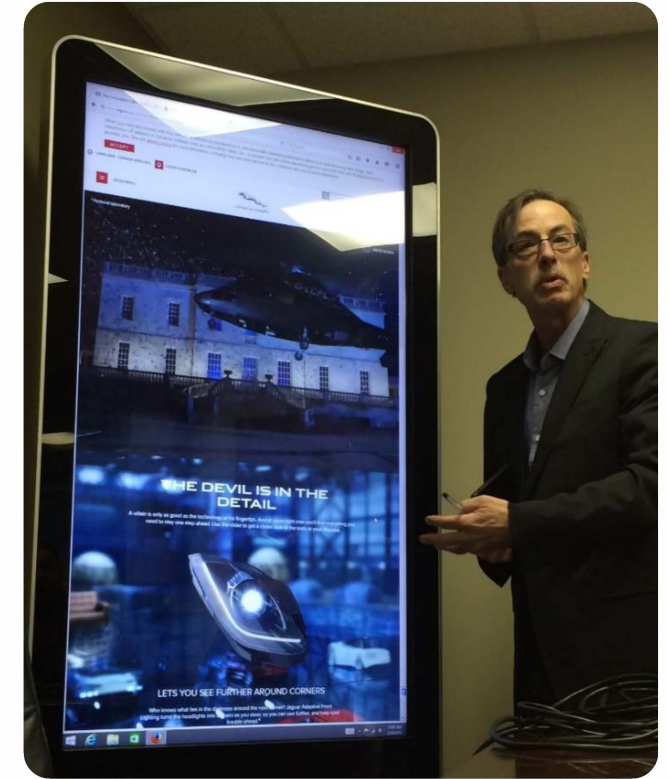
## FLOORSTANDING DIGITAL SIGNAGE



USA(DOUBLE-SIDED DISPLAY)



FINLAND



CANADA

# FLOORSTANDING DIGITAL SIGNAGE

## FULL SCREEN

FULL  
SCREEN



# 70"



70"

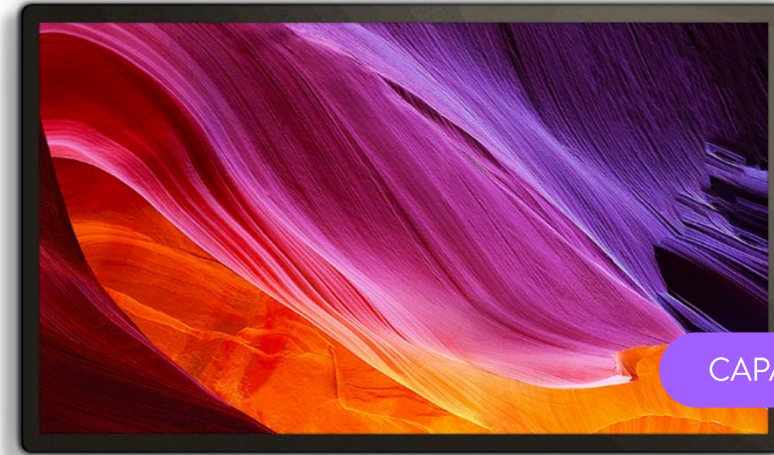
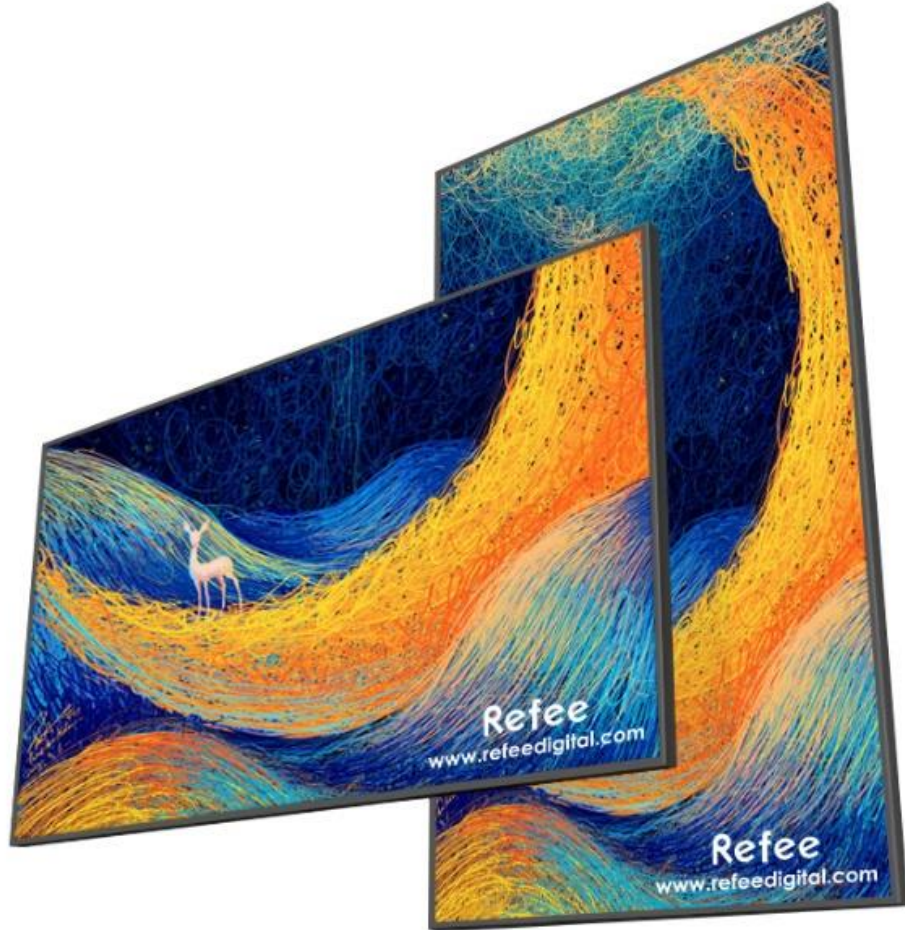


- 4K Resolution
- Full Tempered Glass
- Multiple Interfaces
- Full Screen Design
- Touch Optional
- Camera Optional



# WALL MOUNTING DIGITAL SIGNAGE

## WALL MOUNTING



CAPACITIVE TOUCH

↖ ↗ > 10.1" 13.8" 15.6" ..... 43" 49" 55" ..... 100"



>

- 4K Optional
- Landscape/Portrait
- Touch Optional
- Multiple Sizes
- VESA Mounting
- Front Open Optional



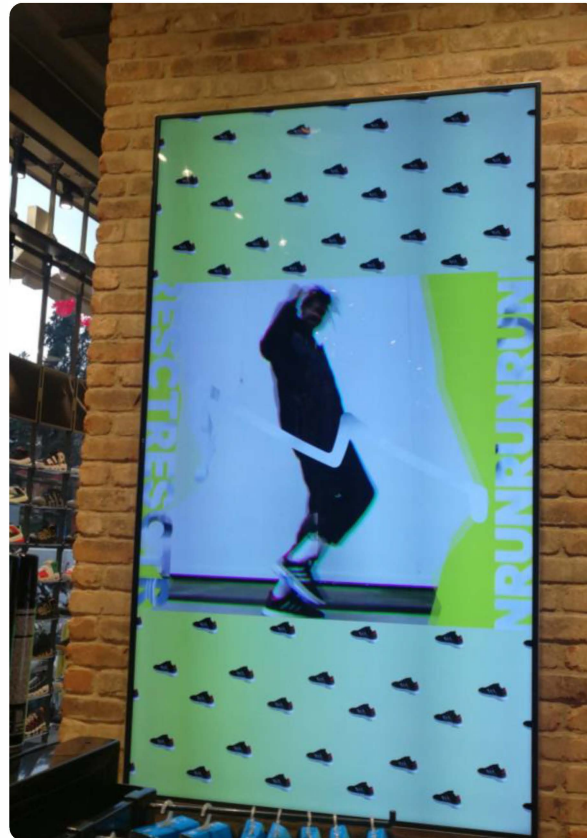
>





# APPLICATIONS

## WALL MOUNTING



# COMMERCIAL TABLET

## VESA MOUNTING



SLIM&THIN DESIGN



13.3" 15.6"



- Ultra Narrow Bezel
- Multi-Touch
- Slim&Thin Design
- VESA Mounting
- Type-C Power Supply
- Built-in Wifi



# SQUARE SCREEN

## SQUARE ASPECT RATIO



1:1 / 5:4

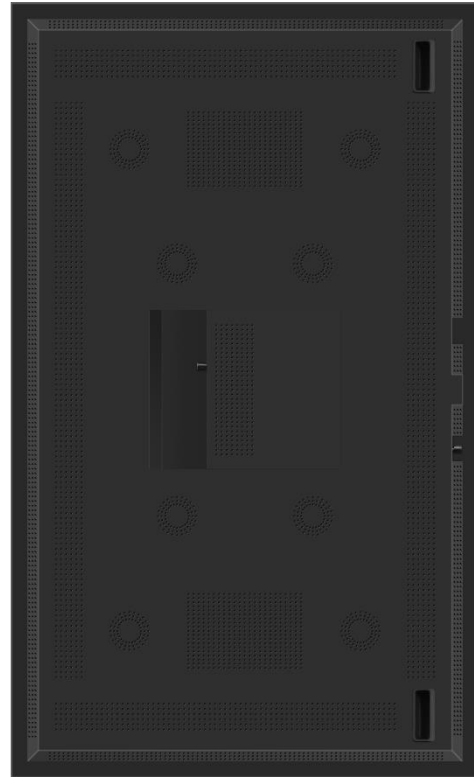
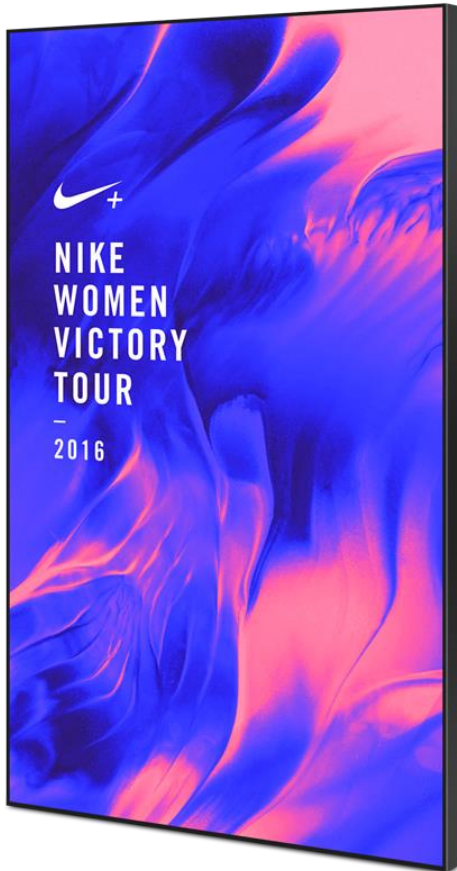
ASPECT RATIO

↕ > 19" 22" 32"

- 📄 >
- Square Aspect Ratio
  - High Definition Panel
  - VESA Mounting
  - Multiple Interfaces

🔧 > 📱 🤖 🏠 🖥️ 🛠️

# HIGH BRIGHTNESS LCD WINDOW FACING DISPLAY



3000 cd/m<sup>2</sup>

BRIGHTNESS

Sunlight Readable



32"

43"

49"

55"

65"

75"

86"



• 3000nits Brightness

• Ambient Light Sensor

• Temperature Control

• Sleek Thin Bezel

• Landscape/Portrait

• Long-lasting Operation




# INDUSTRIAL CONTROL PANEL

## INDUSTRIAL DISPLAY SOLUTION









ASPECT RATIO 16:9/4:3



 > 10.4" 12.1" 13.3" 15" 15.6" 17" 18.5" 19" 21.5" 23.6"

- Industrial Enclosure
- Industrial Motherboard
- Multiple Interfaces
- IP65 Waterproof
- 24/7 Stable Operation
- Flexible Installation

 >     

# MEETING ROOM TABLET

## SURROUNDING LED LIGHT BAR



LED Light  
Adjustment

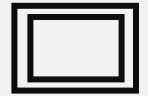
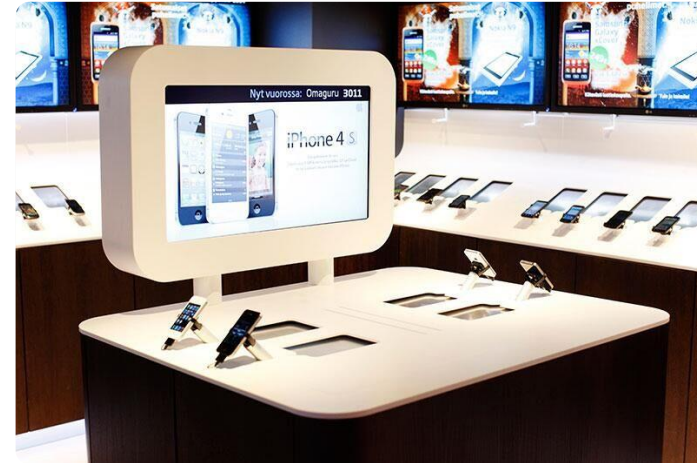


- LED Light Adjustment
- Capacitive Touch
- Android OS
- IPS Commercial LCD
- VESA Mounting
- PoE Optional



# OPEN FRAME LCD DISPLAY

## FRAMELESS



Embedded Installation



10.1"

13.8"

15.6"

.....

43"

49"

55"

.....

100"



• 4K Optional

• Landscape/Portrait

• Touch Optional

• Multiple Sizes

• Open Frame Design

• Multiple Interfaces



# APPLICATIONS

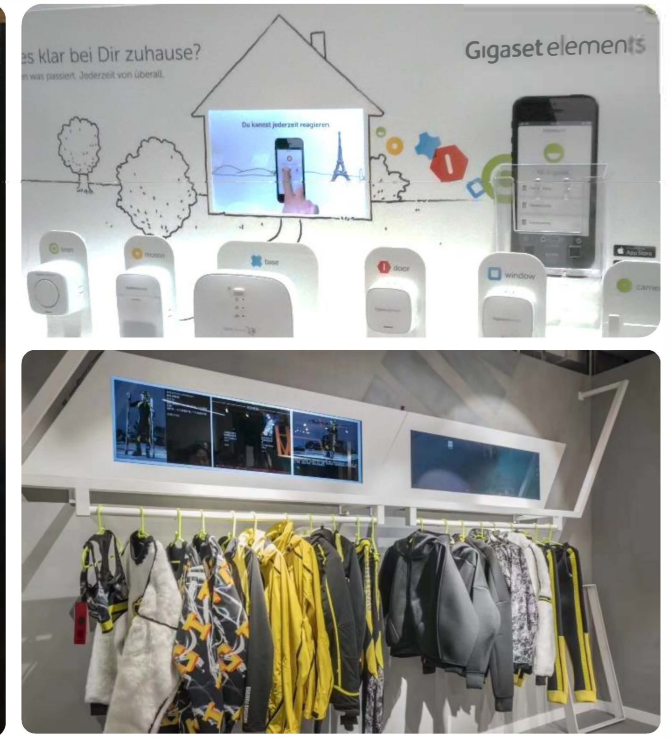
## FRAMELESS DISPLAY



FRANCE



USA



GERMANY / HONGKONG

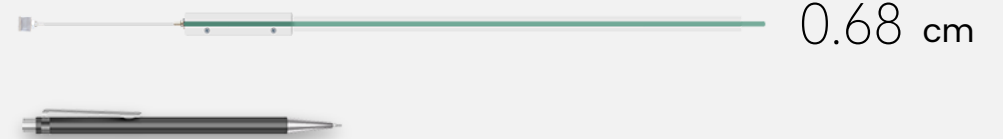


# DOUBLE-SIDED WINDOW DISPLAY

## WINDOW FACING DISPLAY



Thinner than **a pen**



- 4K Optional
- High Brightness For Outward
- Landscape/Portrait
- Ultra Slim Side
- Delicate Design
- Hanging/Freestanding



# APPLICATIONS

## DOUBLE-SIDED DISPLAY



OUTWARD DISPLAY-HIGH BRIGHTNESS



INWARD DISPLAY

# LCD VIDEO WALL SPLICING SCREEN



0.88 mm  
ULTRA SLIM BEZEL

Front Maintenance  
Optional

46" 49" 55" 65"



- 4K Compatible
- Auto-Tiling Technology
- Multiple AV Inputs
- Ultra Slim Bezel
- 24/7 Usage
- Multiple Configuration



# IP65 WATERPROOF OUTDOOR SIGNAGE

## OUTDOOR SIGNAGE



IP65 WEATHERPROOF



IK10 Tempered Glass Protection



- ↕ >
- 32"
  - 43"
  - 49"
  - 55"
  - 65"
  - 75"

- 📄 >
- IP65 Weatherproof
  - 2500nits Brightness
  - Vandal Proof
  - Device Status Monitoring
  - 24/7 Usage
  - Air Conditioning Optional

- 🔧 >
- 📱
  - 🤖
  - 🪟
  - 🖥️
  - 🛠️

# APPLICATIONS

## OUTDOOR SIGNAGE



SWEDEN



FINLAND



UK

# WALL MOUNTING WATERPROOF OUTDOOR SIGNAGE

## OUTDOOR SIGNAGE



Front Maintenance



32"

43"

49"

55"

65"

75"



• IP65 Weatherproof

• Vandal Proof

• 24/7 Usage

• 2500nits Brightness

• Front Door Open

• Network Control Optional



# BATTERY-POWERED WATERPROOF LCD DISPLAY

## PORTABLE DISPLAY



12 hours

BATTERY PLAYTIME



No Need Wall Outlet  
No Wirings



- IP65 Weatherproof
- 2500nits Brightness
- Battery-powered
- 12Hrs Battery Playtime
- Wind-resistance
- Network Control Optional



# ULTRA SLIM OUTDOOR LCD DISPLAY

## OUTDOOR SIGNAGE



LIGHT&THINDESIGN



Ultra Slim Side



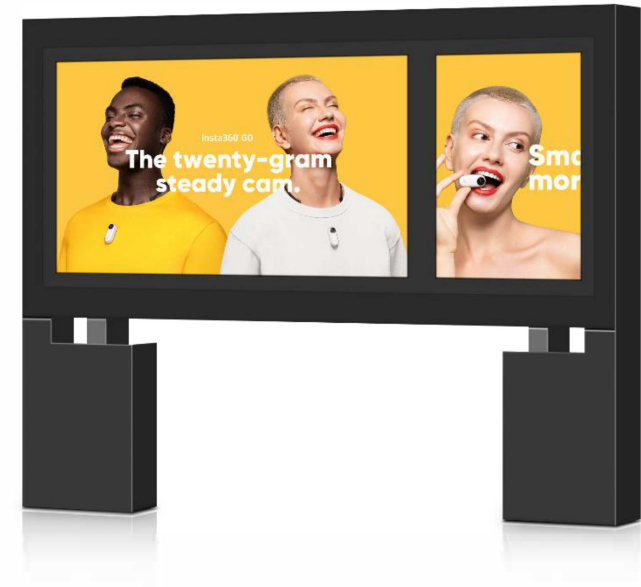
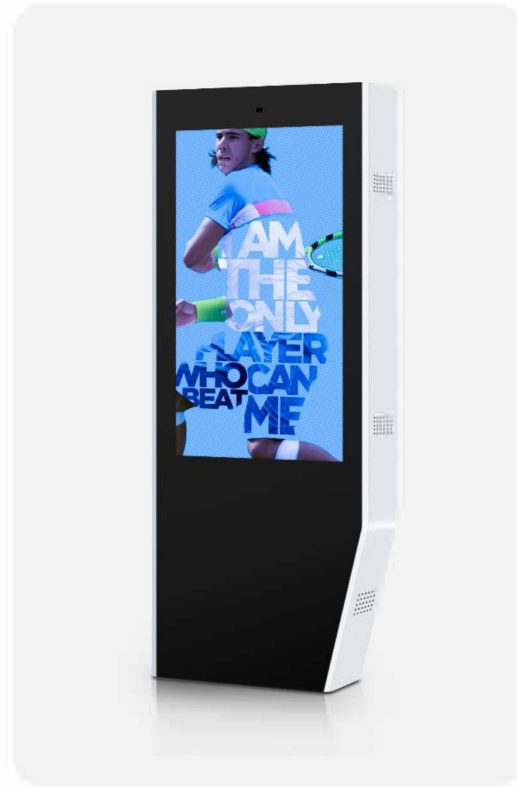
- IP65 Weatherproof
- 2500nits Brightness
- Ultra Slim Side
- Patented Heat Dissipation
- Sunlight Readable
- Network Control Optional





# DOOH SERIES

## WATERPROOF OUTDOOR SIGNAGE



SUPPORT FULL CUSTOMIZATION

# ENJOY MEETING

## INTERACTIVE WHITEBOARD



Support Wireless Display  
Computer | Mobile Phone | Pad



55" 65" 75" 85" 98"

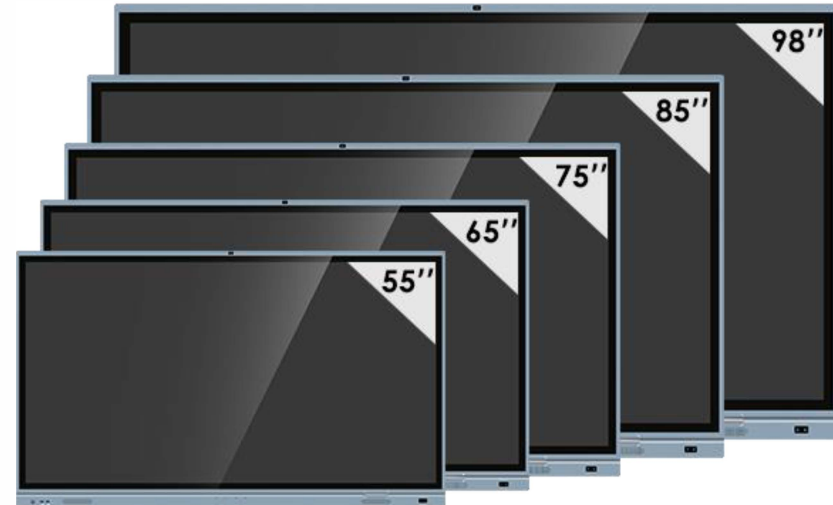


- 4K Resolution
- Multiple Interfaces
- Camera Optional
- Android/Windows Switch
- Simultaneous Pen
- Wall Mounting/Freestanding



# ENJOY MEETING

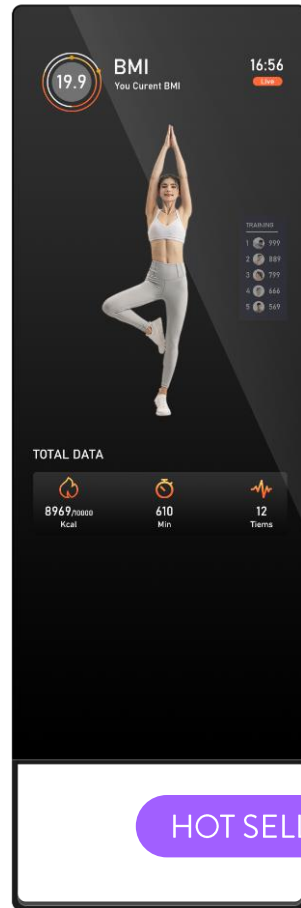
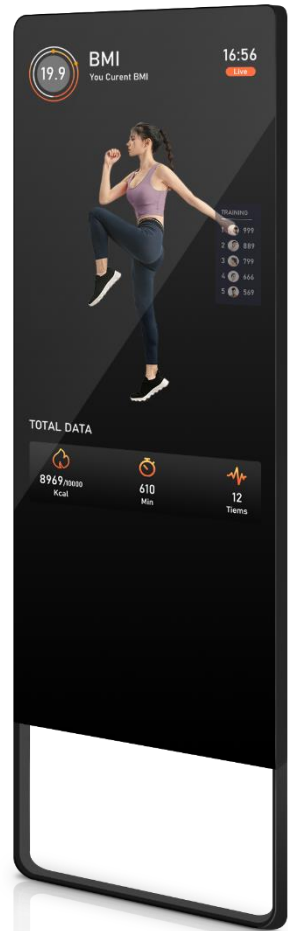
## INTERACTIVE WHITEBOARD



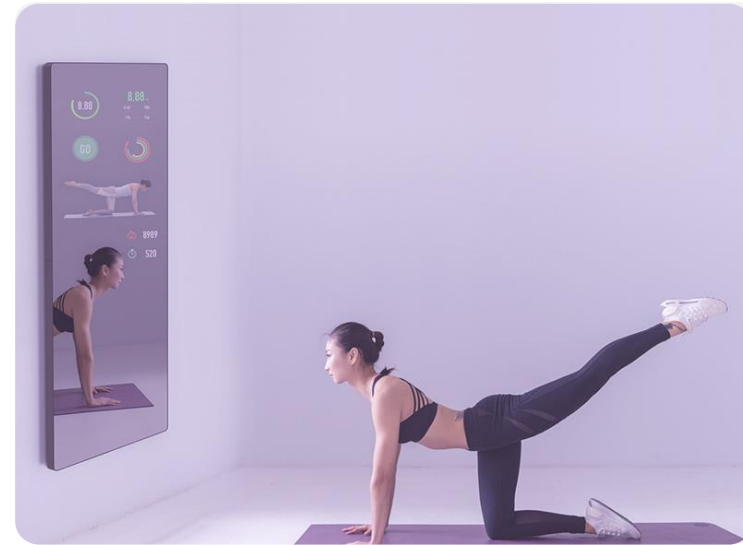
55"	65"	75"	85"	98"
W1270H800 (mm)	W1520H895 (mm)	W1745H1025 (mm)	W1998H1170 (mm)	W2242H1296 (mm)
1-5 people	within 10 people	10-15 people	15-25 people	25-40 people
within 10m <sup>2</sup> space	8-15m <sup>2</sup> space	15-25m <sup>2</sup> space	25-50m <sup>2</sup> space	50-80m <sup>2</sup> space

# FITNESS MAGIC MIRROR

## FITNESS ANYWHERE



HOT SELLING PRODUCT



Support Full Customization

32" 40"

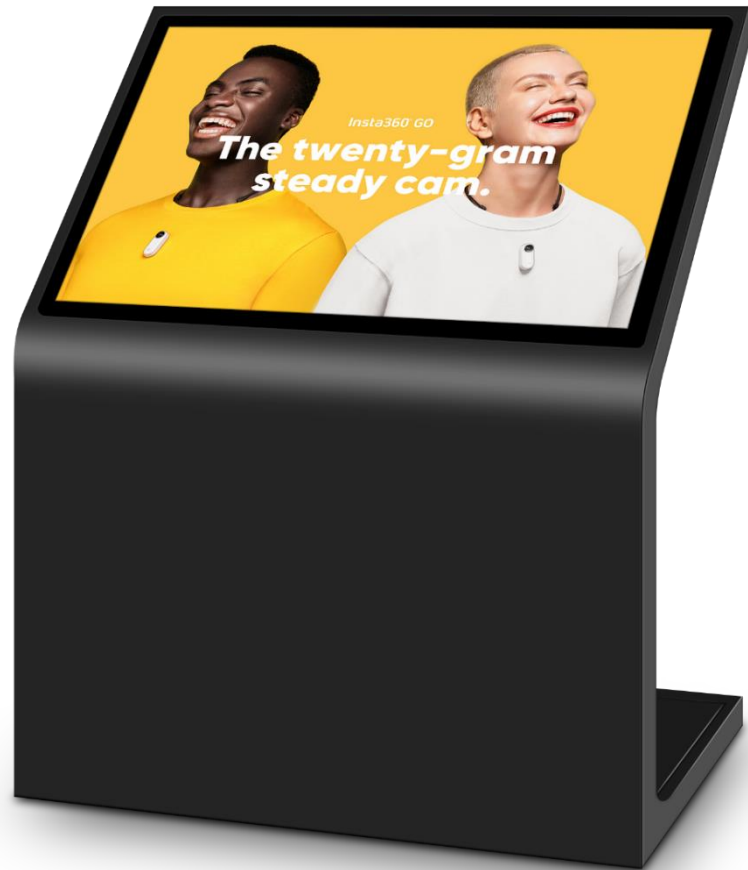


- Full HD Resolution
- High Reflection Mirror
- Camera Optional
- Fitness APP Compatible
- Fashion Style
- Freestanding/Wall Mounting



# TOUCH EVERYWHERE, KIOSK EVERYWHERE

## TOUCH KIOSK



ANOTHER MODEL

↕ > 32" 43" 49" 55" 65"

- ☰ >
- Full HD Resolution
  - Multiple Fashion Style
  - 24/7 Usage
  - Multi-touch
  - Full Customization
  - Multiple Applications

🔧 > 🤖 🏠 🛠️


# TOUCHING TABLE


## TOUCHING&PLAYING








EXPERIENTIAL MARKETING



 > 32" 43" 49" 55" 65"

 > 

- Capacitive Touch
- Wireless Recharging
- Tempered Glass
- Interactive Solutions
- Delicate Design
- Network Control Optional

 >    

# SELF-ORDER KIOSK SMART RESTAURANT



## CUSTOMIZATION

Printer  
Scanner



Designed For  
Quick Service  
Restaurant



- IPS Panel
- Fast-food Solution
- Self Ordering
- Multi-touch
- Full Customization
- Queuing Solution

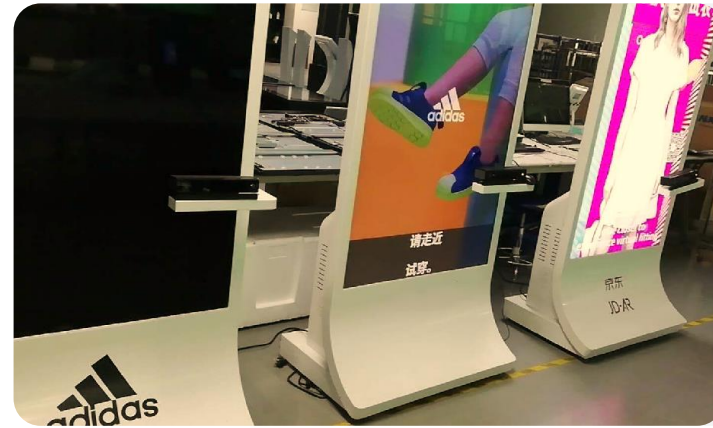


# AR MIRROR

## MAGIC FITTING MIRROR



MICROSOFT KINECT



65"



- Classical Design
- AR Solution

- Interactive Solutions
- Windows OS





# SANITIZING DIGITAL SIGNAGE LCD HAND WASHING



Prevent Virus Transmission &  
Maintain Environment Sanitation

> 13.3" 21.5"

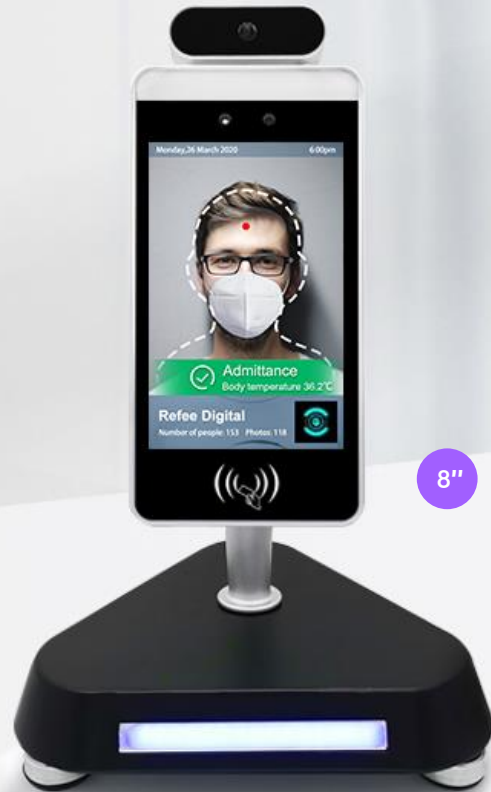


- Separate Design
- Automatic Dispenser
- 3L Tank
- Wall mounting/Freestanding
- Temperature Measurement Optional
- Low Capacity Detection&Reminder Optional



# FACIAL RECOGNITION THERMOMETER DISPLAY

## CONTACTLESS TEMPERATURE DETECTION



Temperature Detection



Facial Recognition



No-mask Detection

COVID-19 SOLUTION

03

# CUSTOMIZATION PROJECT

Solution

# MEET YOUR NEEDS CUSTOMIZATION



Appearance, Color, Logo



NFC, RFID



Bar Code Scanning



Human-body Detection



Webcam And Kinect Camera



Photo Printer And Thermal Printer

# PROCESS CUSTOMIZATION



Referee

New Project

Client



ODM Project  
Customized Function  
Design Within 24Hours

OEM Project  
Customized Design  
Hardware and Software

Quote  
PLM  
Within 24 Hours

Contract  
Production Planing

Production  
Quality And Delivery

# CUSTOMIZATION BOSCH



15.6" IPS Screen

Customized Appearance And Color

Silk LOGO

Pre-install BOSCH Software

# INTELLIGENT SENSING

## P&G ORAL B



Pick up the toothbrush and play  
the video automatically

High tech helps marketing

# TOTEM DIGI TELECOM



43" IPS Screen

Android System

CMS

Customized Casters



# TOUCH KIOSK SHOPPING MALL



27" Screen And 17" Screen

Capacitive Touch

Android System

Wi-Fi And RJ45 Port

# OPEN FRAME DIGITAL SIGNAGE

## SISLEY



15.6" Frameless Screen

Android Version

Customized Interfaces

# FLOORSTANDING DIGITAL SIGNAGE

## NIGERIA MTN



49", 55", 65" IPS Screen

Windows System

Infrared Multi-touch

Customized LOGO